



# PRODUCT GUIDE

## SOLID TIRE



# Driving Tomorrow

## NEXEN is

**NEXEN is the first company to ever manufacture tires in Korea.**

**With its start as Heung-ah Tire Industry in 1968, NEXEN later evolved in the 80s and 90s to become a company possessing world-class technology prowess through technical ties with global tire giants. Since then, NEXEN has progressively been making inroads into foreign markets such as the U.S., China and Europe, expanding its business horizons as an emerging global company.**

**We currently have seven manufacturing plants in Korea, China, and Czech Rep. and have established a global R&D network in the U.S., China and Germany with our domestic central research institute at the core, developing products with distinguished quality and outstanding performance by quickly responding to ever-changing market needs.**

## History

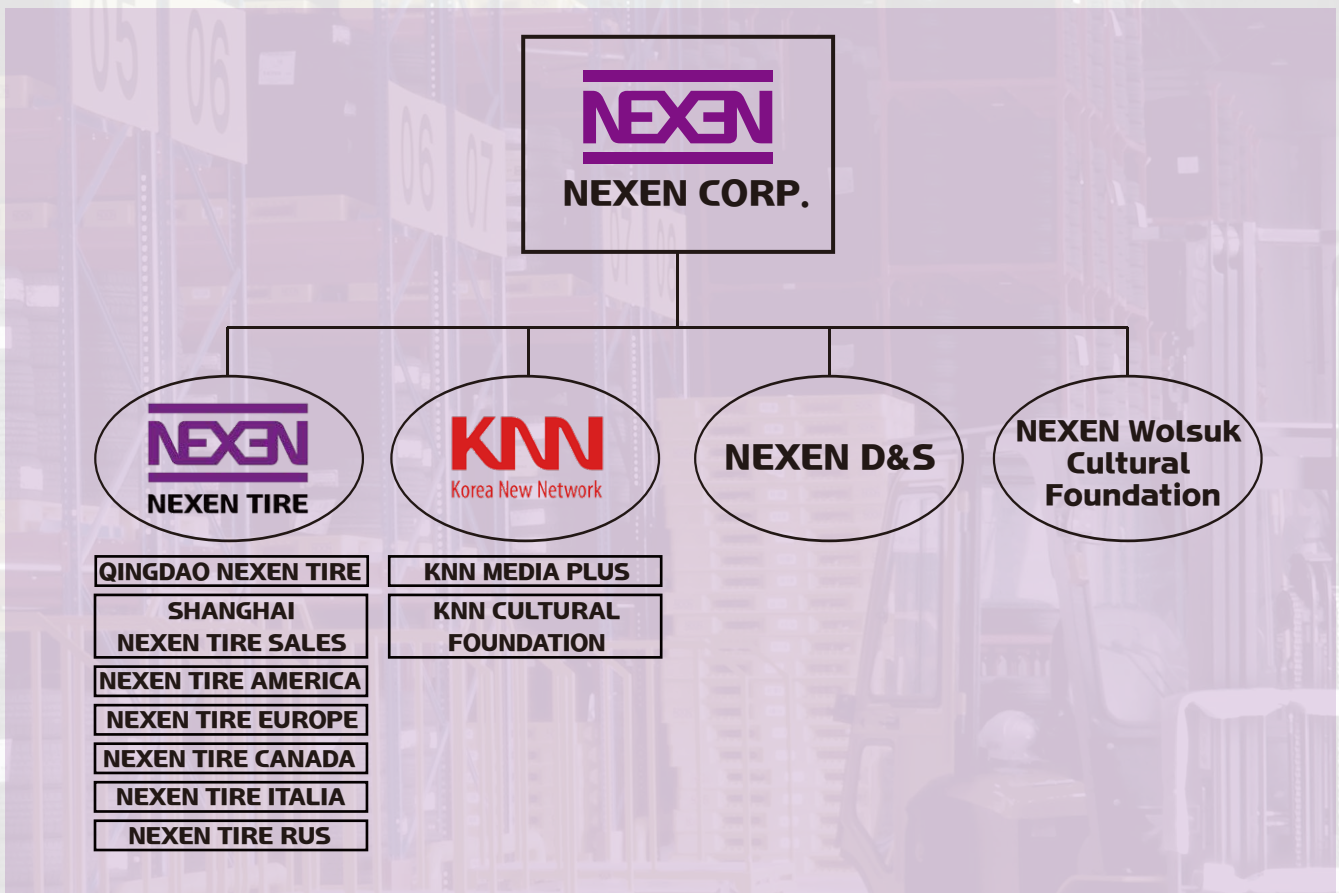
<b>1960s</b>	1968	Established as Heung Ah Tire Ind. Co	<b>2000s</b>	2001	Acquired KNN Broadcasting
				2002	Changed group name to NEXEN
<b>1980s</b>	1989	Awarded a prize for exporting over US\$50,000,000 on 26th Trade day		2003	Established Qingdao Nexen Co. in China
				2009	Established NEXEN D&S
<b>1990s</b>	1994	Acquired ISO 9001	<b>2010s</b>	2012	Began operation of the Changnyeong plant for Passenger car tires
	1995	Established Qingdao Heung Ah Co. in China			Awarded a prize for exporting over US\$700,000,000
	1999	Acquired NEXEN Tire Corporation		2018	Established Czech Zatec plant
				2019	Established Magok R&D Center





## NEXEN GROUP

With NEXEN Corporation as the holding company, we have five affiliated companies, including NEXEN Tire, KNN, NEXEN D&S and NEXEN Wolsuk Cultural Foundation. NEXEN GROUP has a total of 27 subsidiaries globally of which 14 are located overseas.





# SOLIDPRO 7 Series

ULTIMATE PERFORMANCE



OE Supplying

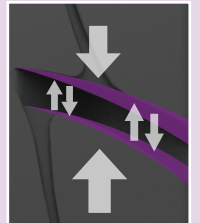
## Enhanced performance, longer life time

- Longer life time
- Improved rolling resistance
- Enlarged block size
- Excellent load distribution



## Good resistance to vibration and impact

- Main groove angle
- Design dispersing ground contact area
- Improved block hardness property
- Chip&Cut improved



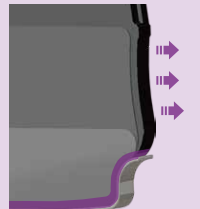
## Upgrade both in function and design

- Deep groove
- Design optimized shoulder
- Wear indicator
- Stylish design



## Smart design for safety

- Overall volume up
- Enhanced pressure uniformity









# SOLIDPRO

---

## THE BEST SOLUTION



OE Supplying

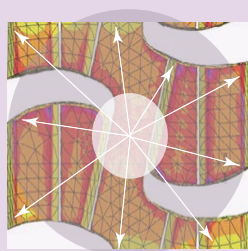
### Optimal pattern for multiple use

Multi Tread Pattern provides you with powerful driving and braking as well as high stability.

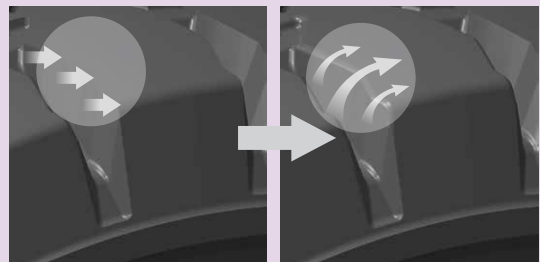
#### \* Traction



#### \* Load dispersion



#### \* Edge rounding









# ALL-PRO HP



OE Supplying

## ALTERNATIVE SOLUTION

### Intensive classic pattern

- Stabilized cross bar pattern
- Strong block durability
- Balanced performance in traction & brake



### Cost effective tire

- Maximized mileage
- Shock absorption through cushion layer
- Compromised 3-layer structure









# NEXEN POB

*From Indoor to Special use*



OE Supplying

## For high loads with small dimension

- High performance tread comp'd
- Design for optimized grounding pressure
- Low rolling resistance

## Advanced steel band technology

Steel band pollution prevention with unique coating tech

## Various pattern and design

- Traction pattern MTA, MS
- Smooth pattern PL, RIB



MTA



MS



PL



RIB





# SPECIFICATIONS

## LOT Number

**2411**

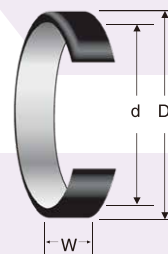
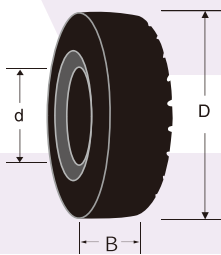
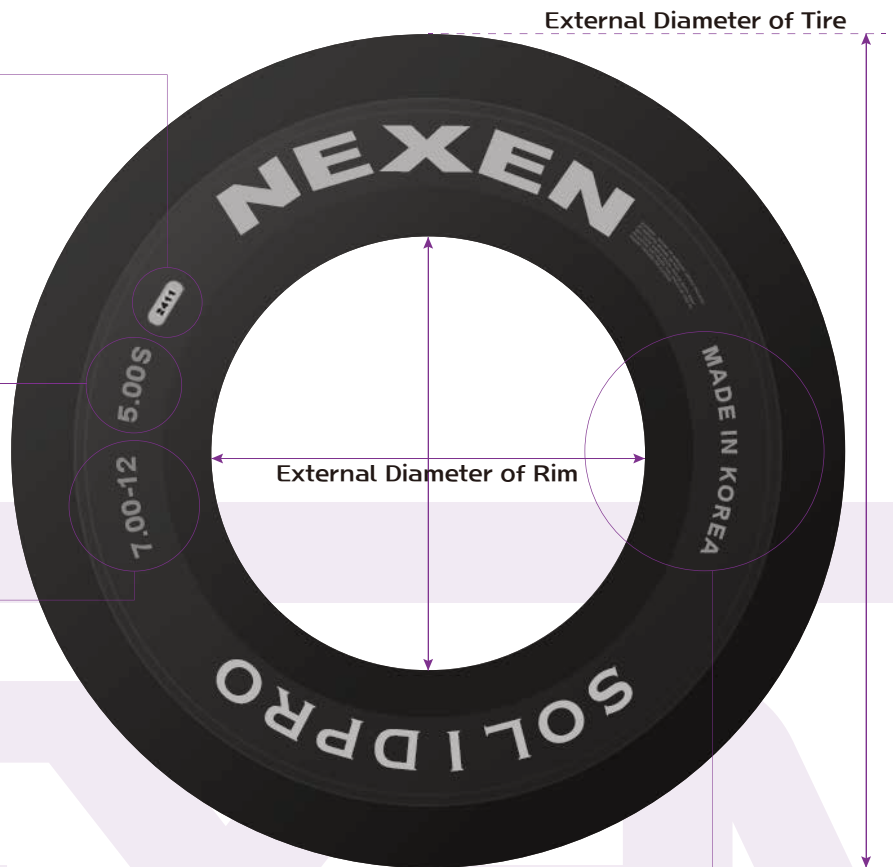
24 WEEK 11 YEAR  
: Produced in 24th week of 2011

## RIM (Wheel) Size

## Tire Size

## Country of Origin

## How to Read



Type of Tire	Indication	Example
Pneumatic shaped tire	B - d	7.00 - 12
Low profile tire	D X B - d	18 X 7 - 8
Trolley tire	D X B	23 X 5
Trailer tire	B - d	300 - 15

Indication	Example
D X W X d (inch)	18 X 8 X 12 1/8
D X W - d (mm)	457 X 203 - 308



# SOLIDPRO 7 Series

## PATTERN: TRACTION



Size	Rim	Easy Fit (Clip)	O.D. (mm)	W.D. (mm)	Load Capacity(kg)					Weight (kg)	
					Load	Steer	~6km/h	~10km/h	~25km/h		Static
<b>8"</b>											
4.00-8	3.00D	O	409	115	950	730	950	860	730	1,100	11.3
4.00-8	3.75I	-	409	115	950	730	950	860	730	1,100	11.6
5.00-8	3.00D	O	456	124	1,415	1,090	1,415	1,285	1,090	1,645	15.7
5.00-8	3.75I	-	456	124	1,415	1,090	1,415	1,285	1,090	1,645	16.2
15X4½-8 (125/75-8)	3.00D	O	378	113	1,040	800	1,040	945	800	1,210	9.0
16X6-8	4.33R	O	419	141	1,495	1,150	1,495	1,360	1,150	1,740	14.9
18X7-8 (180/70-8)	4.33R	O	454	163	2,145	1,650	2,145	1,945	1,650	2,490	20.6
18X9-8	7.00E	O	464	209	2,300	1,900	2,300	2,090	1,900	2,945	29.0
<b>9"</b>											
15X5½-9 (140/55-9)	4.00E	O	380	130	1,170	900	1,170	1,060	900	1,360	9.7
6.00-9	4.00E	O	530	141	1,885	1,450	1,885	1,710	1,450	2,190	25.6
21X8-9 (200/75-9)	6.00E	O	522	185	2,755	2,120	2,755	2,500	2,120	3,200	32.4
<b>10"</b>											
180/60-10	5.00F	O	462	162	2,410	1,850	2,410	2,180	1,850	2,795	20.2
200/50-10	6.50F	O	458	196	2,470	1,900	2,470	2,240	1,900	2,870	23.3
6.50-10	5.00F	O	580	171	2,340	1,800	2,340	2,125	1,800	2,720	35.3
6.50-10	5.50F	-	580	171	2,340	1,800	2,340	2,125	1,800	2,720	35.3
23X9-10 (225/75-10)	6.50F	O	585	205	3,445	2,650	3,445	3,125	2,650	4,000	46.0
7.50-10	5.00F	O	634	186	3,070	2,360	3,070	2,785	2,360	3,565	51.1
7.50-10	5.50F	O	634	186	3,070	2,360	3,070	2,785	2,360	3,565	51.5
<b>12"</b>											
7.00-12	5.00S	O	660	173	2,920	2,240	2,920	2,645	2,240	3,380	46.5
23X10-12 (250/60-12)	8.00G	O	586	240	3,770	2,900	3,770	3,420	2,900	4,380	48.0
315X45-12 (23X12-12)	10.00G	O	574	284	4,485	3,450	4,485	4,070	3,450	5,210	55.7
27X10-12 (250/75-12)	8.00G	O	682	241	3,900	3,000	3,900	3,540	3,000	4,530	72.0
<b>13"</b>											
23x5 (150/100-13)	3.75P	O	618	139	1,495	1,150	1,495	1,360	1,150	1,735	30.0
<b>15"</b>											
6.00-15	4.50E	-	700	157	2,455	1,820	2,455	2,095	1,820	3,165	43.5
7.00-15	5.50	O	740	175	3,545	2,725	3,545	3,215	2,725	4,115	55.4
7.00-15	6.00	O	740	175	3,545	2,725	3,545	3,215	2,725	4,115	55.9
7.50-15	5.50	-	760	197	3,900	3,000	3,900	3,540	3,000	4,530	65.6
7.50-15	6.00	-	760	197	3,900	3,000	3,900	3,540	3,000	4,530	66.4
7.50-15	6.50	O	760	197	3,900	3,000	3,900	3,540	3,000	4,530	67.0
8.15-15 (28X9-15, 225/75-15)	7.00	O	698	215	3,445	2,650	3,445	3,125	2,650	4,380	57.2
8.25-15	6.50	O	814	215	4,750	3,650	4,750	4,300	3,650	5,510	87.3
28X12.5-15 (355/45-15)	9.75	O	695	299	5,525	4,250	5,525	5,015	4,250	6,420	81.0
355/50-15	9.75	O	721	302	5,690	4,375	5,690	5,165	4,375	6,420	93.3
250-15 (250/70-15)	7.00	O	722	225	4,745	3,650	4,745	4,310	3,650	5,510	65.8
250-15 (250/70-15)	7.50	O	722	225	4,745	3,650	4,745	4,310	3,650	5,510	67.6
300-15 (315/70-15)	8.00	O	820	259	5,850	4,500	5,850	5,310	4,500	6,795	107.6
355/65-15 (32X12.1-15)	9.75	O	816	300	7,800	6,000	7,085	6,430	5,450	9,060	128.1
400/60-15	11.00	O	817	329	8,970	6,900	8,970	8,140	6,900	10,350	134.4
<b>16"</b>											
7.50-16	5.50	-	782	197	3,950	3,050	3,950	3,600	3,050	4,605	69.5
7.50-16	6.00GS	O	782	197	3,950	3,050	3,950	3,600	3,050	4,605	69.9
<b>20"</b>											
355/50-20	10.00	O	825	310	8,970	6,900	8,970	8,140	6,900	10,440	104.3
9.00-20	7.00	-	1,000	229	5,400	4,500	5,400	4,905	4,500	6,795	133.5
10.00-20	7.00	-	1,033	261	6,000	5,000	6,000	5,450	5,000	7,550	162.7
10.00-20	7.50	-	1,033	261	6,000	5,000	6,000	5,450	5,000	7,550	163.6
10.00-20	8.00	-	1,033	261	6,000	5,000	6,000	5,450	5,000	7,550	164.9
11.00-20	7.50	-	1,075	273	6,540	5,450	6,540	5,940	5,450	8,230	190.4
11.00-20	8.00	-	1,075	273	6,540	5,450	6,540	5,940	5,450	8,230	191.8
12.00-20	8.00	-	1,100	293	7,560	6,300	7,560	6,865	6,300	9,440	213.6
12.00-20	8.50	-	1,100	293	7,560	6,300	7,560	6,865	6,300	9,440	217.0
12.00-20	10.00	-	1,100	293	7,560	6,300	7,560	6,865	6,300	9,440	220.9
<b>24"</b>											
12.00-24	8.00	-	1,200	292	8,040	6,700	8,040	7,305	6,700	10,040	250.0
12.00-24	8.50	-	1,200	292	8,040	6,700	8,040	7,305	6,700	10,040	251.3
12.00-24	10.00	-	1,200	292	9,000	7,500	8,500	7,750	7,100	10,040	256.5
14.00-24	10.00	-	1,320	341	11,100	9,250	11,100	10,085	9,250	13,855	367.9

\* Load capacity is based on counter balanced forklift truck and guaranteed up to 25km/h.

\* In case of installation to other equipment, please consult with manufacturer for compatibility.

\* For other sizes not on the list, please contact the NEXEN export in your area to check tire availability.

# SOLIDPRO

## PATTERN: TRACTION



Size	Rim	Easy Fit (Clip)	O.D. (mm)	W.D. (mm)	Load Capacity(kg)					Weight (kg)		
					Load	Steer	~6km/h	~10km/h	~25km/h		Static	
<b>4"</b>												
3.00-4	2.10	O	252	85	260	195	260	235	195	295	3.5	
4.00-4	2.50C	O	309	105	535	412	535	485	412	620	7.0	
<b>5"</b>												
3.50-5	2.50C	O	296	99	540	420	540	500	420	605	5.7	
3.50-5	3.00SP	O	296	99	540	420	540	500	420	605	6.0	
<b>8"</b>												
4.00-8	3.00D	O	409	116	950	730	950	860	730	1,100	11.1	
4.00-8	3.75I	O	409	116	950	730	950	860	730	1,100	11.4	
5.00-8	3.00D	O	458	125	1,415	1,090	1,415	1,285	1,090	1,645	16.1	
5.00-8	3.25I	O	458	125	1,415	1,090	1,415	1,285	1,090	1,645	16.4	
5.00-8	3.75I	O	458	125	1,415	1,090	1,415	1,285	1,090	1,645	16.4	
15X4½-8 (125/75-8)	3.00D	O	380	115	1,040	800	1,040	945	800	1,210	9.7	
15X4½-8 (125/75-8)	3.25I	O	380	115	1,040	800	1,040	945	800	1,210	11.4	
16X6-8 (150/75-8)	4.33R	O	419	152	1,495	1,150	1,495	1,360	1,150	1,740	16.2	
18X7-8 (180/70-8)	4.33R	O	454	158	2,145	1,650	2,145	1,945	1,650	2,490	20.5	
18X9-8	7.00E	O	466	208	2,300	1,900	2,300	2,090	1,900	2,945	30.5	
<b>9"</b>												
15X5½-9 (140/55-9)	4.00E	O	384	131	1,170	900	1,170	1,060	900	1,360	10.3	
6.00-9	4.00E	O	535	140	1,885	1,450	1,885	1,710	1,450	2,190	26.5	
21X8-9 (200/75-9)	6.00E	O	523	184	2,755	2,120	2,755	2,500	2,120	3,200	33.0	
<b>10"</b>												
180/60-10	5.00F	O	462	162	2,410	1,850	2,410	2,180	1,850	2,795	20.1	
200/50-10	6.50F	O	462	198	2,470	1,900	2,470	2,240	1,900	2,870	24.9	
6.50-10	5.00F	O	580	172	2,340	1,800	2,340	2,125	1,800	2,720	35.8	
6.50-10	5.50F	O	580	172	2,340	1,800	2,340	2,125	1,800	2,720	36.0	
23X9-10 (225/75-10)	6.50F	O	589	204	3,445	2,650	3,445	3,125	2,650	4,000	46.9	
7.50-10	5.00F	O	636	192	3,070	2,360	3,070	2,785	2,360	3,565	51.6	
7.50-10	5.50F	O	636	192	3,070	2,360	3,070	2,785	2,360	3,565	51.9	
<b>12"</b>												
7.00-12	5.00S	O	660	172	2,920	2,240	2,920	2,645	2,240	3,380	46.4	
23X10-12 (250/60-12)	8.00G	O	595	240	3,770	2,900	3,770	3,420	2,900	4,380	52.9	
315/45-12 (23X12-12)	10.00G	O	574	285	4,485	3,450	4,485	4,070	3,450	5,210	56.1	
27X10-12 (250/75-12)	8.00G	O	682	244	3,900	3,000	3,900	3,540	3,000	4,530	74.6	
<b>13"</b>												
23X5 (150/100-13)	3.75P	O	628	140	1,495	1,150	1,495	1,360	1,150	1,735	32.3	
<b>15"</b>												
6.00-15	4.50E	O	700	155	2,455	1,820	2,455	2,095	1,820	3,165	44.0	
7.00-15	5.50	O	742	175	3,545	2,725	3,545	3,215	2,725	4,115	56.5	
7.00-15	6.00	O	742	175	3,545	2,725	3,545	3,215	2,725	4,115	56.8	
7.50-15	5.50	O	762	197	3,900	3,000	3,900	3,540	3,000	4,530	67.3	
7.50-15	6.00	O	762	197	3,900	3,000	3,900	3,540	3,000	4,530	68.0	
7.50-15	6.50	O	762	197	3,900	3,000	3,900	3,540	3,000	4,530	69.2	
8.15-15 (28X9-15, 225/75-15)	7.00	O	704	212	3,445	2,650	3,445	3,125	2,650	4,380	60.0	
8.25-15	5.50	O	815	202	4,615	3,550	4,615	4,190	3,550	5,510	81.5	
8.25-15	6.50	O	815	202	4,750	3,650	4,750	4,300	3,650	5,510	82.3	
28X12.5-15 (355/45-15)	9.75	O	695	299	5,525	4,250	5,525	5,015	4,250	6,420	80.5	
355/50-15	9.75	O	721	310	5,690	4,375	5,690	5,165	4,375	6,420	91.3	
32X12.1-15	9.75	O	818	299	6,500	5,000	6,500	5,900	5,000	9,060	119.9	
250-15 (250/70-15)	7.00	O	725	226	4,745	3,650	4,745	4,310	3,650	5,510	67.6	
250-15 (250/70-15)	7.50	O	725	226	4,745	3,650	4,745	4,310	3,650	5,510	68.1	
300-15 (315/70-15)	8.00	O	820	259	5,850	4,500	5,850	5,310	4,500	6,795	107.6	
355/65-15	9.75	O	817	300	7,800	6,000	7,085	6,430	5,450	9,060	133.8	
400/60-15	11.00	O	817	329	8,970	6,900	8,970	8,140	6,900	10,350	134.4	
<b>16"</b>												
7.50-16	5.50	O	782	197	3,950	3,050	3,950	3,600	3,050	4,605	70.9	
7.50-16	6.00GS	O	782	197	3,950	3,050	3,950	3,600	3,050	4,605	73.1	
8.00-16	5.50	-	815	207	4,180	3,190	4,180	3,800	3,190	4,785	83.6	





**PATTERN: TRACTION**

Size	Rim	Easy Fit (Clip)	O.D. (mm)	W.D. (mm)	Load Capacity(kg)					Weight (kg)	
					Load	Steer	~6km/h	~10km/h	~25km/h		Static
<b>20"</b>											
355/50-20	10.00	O	825	310	8,970	6,900	8,970	8,140	6,900	10,440	102.2
9.00-20	6.50	-	1,017	230	5,400	4,500	5,400	4,905	4,500	6,795	142.0
9.00-20	7.00	-	1,017	230	5,400	4,500	5,400	4,905	4,500	6,795	142.5
9.00-20	7.50	-	1,017	230	5,400	4,500	5,400	4,905	4,500	6,795	143.1
9.00-20	8.00	-	1,017	230	5,400	4,500	5,400	4,905	4,500	6,795	143.9
10.00-20	7.00	-	1,034	258	6,000	5,000	6,000	5,450	5,000	7,550	162.1
10.00-20	7.50	-	1,034	258	6,000	5,000	6,000	5,450	5,000	7,550	162.6
10.00-20	8.00	-	1,034	258	6,000	5,000	6,000	5,450	5,000	7,550	163.5
11.00-20	7.50	-	1,090	280	6,540	5,450	6,540	5,940	5,450	8,230	199.2
11.00-20	8.00	-	1,090	280	6,540	5,450	6,540	5,940	5,450	8,230	200.2
12.00-20	8.00	-	1,103	296	7,560	6,300	7,560	6,865	6,300	9,440	217.3
12.00-20	8.50	-	1,103	296	7,560	6,300	7,560	6,865	6,300	9,440	219.1
12.00-20	10.00	-	1,103	296	7,560	6,300	7,560	6,865	6,300	9,440	224.9
<b>24"</b>											
12.00-24	8.00	-	1,206	296	8,040	6,700	8,040	7,305	6,700	10,040	247.5
12.00-24	8.50	-	1,206	296	8,040	6,700	8,040	7,305	6,700	10,040	248.9
12.00-24	10.00	-	1,206	296	8,040	6,700	8,040	7,305	6,700	10,040	258.4
14.00-24	10.00	-	1,316	322	11,100	9,250	11,100	10,085	9,250	13,855	353.2

- \* Load capacity is based on counter balanced forklift truck and guaranteed up to 25km/h.
- \* In case of installation to other equipment, please consult with manufacturer for compatibility.
- \* For other sizes not on the list, please contact the NEXEN export in your area to check tire availability.

**PATTERN: SMOOTH**

Size	Rim	Easy Fit (Clip)	O.D. (mm)	W.D. (mm)	Load Capacity(kg)					Weight (kg)	
					Load	Steer	~6km/h	~10km/h	~25km/h		Static
<b>15"</b>											
300-15 (315/70-15)	8.00	O	830	266	5,850	4,500	5,850	5,310	4,500	6,795	115.0
<b>20"</b>											
355/50-20	10.00	O	825	310	8,970	6,900	8,970	8,140	6,900	10,440	110.0
10.00-20	7.00	-	1,015	252	6,000	5,000	6,000	5,450	5,000	7,550	186.9
10.00-20	7.50	-	1,015	252	6,000	5,000	6,000	5,450	5,000	7,550	188.4
10.00-20	8.00	-	1,015	252	6,000	5,000	6,000	5,450	5,000	7,550	189.7
11.00-20	8.00	-	1,070	272	6,540	5,450	6,540	5,940	5,450	8,230	199.3

- \* Load capacity is based on counter balanced forklift truck and guaranteed up to 25km/h.
- \* In case of installation to other equipment, please consult with manufacturer for compatibility.
- \* For other sizes not on the list, please contact the NEXEN export in your area to check tire availability.



# ALL-PRO HP



## PATTERN: TRACTION

Size	Rim	Easy Fit (Clip)	O.D. (mm)	W.D. (mm)	Load Capacity(kg)					Weight (kg)		
					Load	Steer	~6km/h	~10km/h	~25km/h		Static	
<b>8"</b>												
5.00-8	3.00D	O	458	125	1,415	1,090	1,415	1,285	1,090	1,645	17.1	
15X4½-8 (125/75-8)	3.00D	O	380	115	1,040	800	1,040	945	800	1,210	9.5	
16X6-8 (150/75-8)	4.33R	O	419	138	1,495	1,150	1,495	1,360	1,150	1,740	16.0	
18X7-8 (180/70-8)	4.33R	O	454	158	2,145	1,650	2,145	1,945	1,650	2,490	20.5	
<b>9"</b>												
15X5½-9 (140/55-9)	4.00E	O	384	131	1,170	900	1,170	1,060	900	1,360	10.7	
6.00-9	4.00E	O	535	140	1,885	1,450	1,885	1,710	1,450	2,190	27.2	
21X8-9 (200/75-9)	6.00E	O	523	184	2,755	2,120	2,755	2,500	2,120	3,200	33.0	
<b>10"</b>												
200/50-10	6.50F	O	462	198	2,470	1,900	2,470	2,240	1,900	2,870	24.4	
6.50-10	5.00F	O	580	172	2,340	1,800	2,340	2,125	1,800	2,720	35.6	
23X9-10 (225/75-10)	6.50E	O	589	204	3,445	2,650	3,445	3,125	2,650	4,000	46.4	
<b>12"</b>												
7.00-12	5.00S	O	660	172	2,920	2,240	2,920	2,645	2,240	3,380	46.2	
23X10-12 (250/60-12)	8.00G	O	595	240	3,770	2,900	3,770	3,420	2,900	4,380	52.5	
27X10-12 (250/75-12)	8.00G	O	682	246	3,900	3,000	3,900	3,540	3,000	4,530	76.7	
<b>15"</b>												
6.00-15	4.50E	-	700	155	2,455	1,820	2,455	2,095	1,820	3,165	44.2	
7.00-15	5.50	O	742	175	3,545	2,725	3,545	3,215	2,725	4,115	57.2	
7.50-15	6.00	O	762	197	3,900	3,000	3,900	3,540	3,000	4,530	68.4	
7.50-15	6.50	O	762	197	3,900	3,000	3,900	3,540	3,000	4,530	69.2	
8.15-15 (28X9-15, 225/75-15)	7.00	O	704	212	3,445	2,650	3,445	3,125	2,650	4,380	59.6	
8.25-15	6.50	O	815	202	4,750	3,650	4,750	4,300	3,650	5,510	83.9	
28X12.5-15 (355/45-15)	9.75	O	721	310	5,525	4,250	5,525	5,015	4,250	6,420	94.2	
32X12.1-15	9.75	O	815	299	6,500	5,000	6,500	5,900	5,000	9,060	127.9	
250-15 (250/70-15)	7.00	O	724	226	4,745	3,650	4,745	4,310	3,650	5,510	69.7	
250-15 (250/70-15)	7.50	O	724	226	4,745	3,650	4,745	4,310	3,650	5,510	71.2	
300-15 (315/70-15)	8.00	O	820	266	5,850	4,500	5,850	5,310	4,500	6,795	110.3	
355/65-15	9.75	O	830	300	7,800	6,000	7,085	6,430	5,450	9,060	136.8	
<b>16"</b>												
7.50-16	6.00GS	O	788	197	3,950	3,050	3,950	3,600	3,050	4,605	72.0	

\* Load capacity is based on counter balanced forklift truck and guaranteed up to 25km/h.

\* In case of installation to other equipment, please consult with manufacturer for compatibility.

\* For other sizes not on the list, please contact the NEXEN export in your area to check tire availability.



# Special Patterns



## PATTERN: TRACTION & SMOOTH

Size	Rim	LUG	CB	MS	PL	RIB	Easy Fit (Clip)	O.D. (mm)	W.D. (mm)	Load Capacity(kg)				Weight (kg)		
										Load	Steer	~6km/h	~10km/h		~25km/h	Static
<b>4"</b>																
3.00-4	2.50C						O	250	85	260	195	260	235	195	295	3.3
<b>5"</b>																
3.50-5	2.50C	O					O	293	99	540	420	540	500	420	630	5.5
<b>8"</b>																
2.00-8	2.50C				O		O	305	98	825	635	825	750	635	955	4.4
3.00-8	2.50C				O		O	358	102	875	675	875	800	675	1,015	8.2
4.00-8	3.00D	O				O	O	405	116	950	730	950	860	730	1,100	11.2
4.00-8	3.75I	O				O	O	405	116	950	730	950	860	730	1,100	12.3
5.00-8	3.75I					O	O	458	125	1,415	1,090	1,415	1,285	1,090	1,645	18.0
<b>9"</b>																
6.00-9	4.00E				O		O	530	139	1,885	1,450	1,885	1,710	1,450	2,190	27.4
6.00-9	4.00EK					O	O	535	140	1,885	1,450	1,885	1,710	1,450	2,190	26.5
<b>12"</b>																
7.00-12	5.00S				O		O	653	172	2,920	2,240	2,920	2,645	2,240	3,380	48.3
23X10-12 (250/60-12)	8.00G		O				O	589	240	3,770	2,900	3,770	3,420	2,900	4,380	49.8
<b>15"</b>																
7.00-15	5.50		O				O	734	175	3,545	2,725	3,545	3,215	2,725	4,115	54.7
<b>16"</b>																
6.50-16	5.50F			O			-	742	177	2,600	2,000	2,600	2,360	2,000	3,000	55.5
8.00-16	5.50			O			-	807	207	4,180	3,190	4,180	3,800	3,190	4,785	80.4
8.25-16	6.00GS	O					-	840	206	4,750	3,650	4,750	4,300	3,650	5,510	91.9
9.00-16	5.50	O		O			-	852	232	4,430	3,405	4,430	4,010	3,405	5,110	104.5
9.00-16	6.50	O					-	852	232	4,430	3,405	4,430	4,010	3,405	5,110	105.0
<b>20"</b>																
8.25-20	6.00	O					-	955	222	4,380	3,650	4,380	3,980	3,650	5,550	117.3
8.25-20	6.50	O			O		-	955	222	4,380	3,650	4,380	3,980	3,650	5,550	119.1
8.25-20	7.00T	O					-	955	222	4,380	3,650	4,380	3,980	3,650	5,550	119.5
9.00-20	6.50	O					-	1,006	232	5,400	4,500	5,400	4,905	4,500	6,795	140.9
9.00-20	7.00	O					-	1,006	232	5,400	4,500	5,400	4,905	4,500	6,795	140.7
9.00-20	8.00	O					-	1,006	232	5,400	4,500	5,400	4,905	4,500	6,795	140.9
10.00-20	7.50	O					-	1,024	258	6,000	5,000	6,000	5,450	5,000	7,550	160.3
10.00-20	8.00	O					-	1,024	258	6,000	5,000	6,000	5,450	5,000	7,550	163.5
12.00-20	8.00				O	O	-	1,092	297	7,560	6,300	7,560	6,865	6,300	9,440	229.4
12.00-20	8.50				O	O	-	1,092	297	7,560	6,300	7,560	6,865	6,300	9,440	231.6
12.00-20	10.00				O	O	-	1,092	297	7,560	6,300	7,560	6,865	6,300	9,440	233.8

- \* Load capacity is based on counter balanced forklift truck and guaranteed up to 25km/h.
- \* In case of installation to other equipment, please consult with manufacturer for compatibility.
- \* There might be a weight difference in same sizes depending on its pattern.
- \* For other sizes not on the list, please contact the NEXEN export in your area to check tire availability.

# NEXEN POB

PATTERN: TRACTION & SMOOTH



Size		MTA	MS	PL	RIB	O.D. (mm)	W.D. (mm)	Load Capacity(kg)						Weight (kg)	
inch	mm							~10km/h		~16km/h		~25km/h			~16km/h
		Load		Steer		Load		Steer		Load	Steer	Others			
<b>CASTER</b>															
	178X73			O		178	73					320		3.9~6.5	
	180X75				O	180	75					320		7.8	
	204X70				O	204	70					350		8.0	
	204X76				O	204	76					370		7.6~7.9	
	254X60			O		254	60							7.8	
	254X100				O	254	100					980		6.0	
	255X120				O	255	120					1,350		9.1	
<b>POB</b>															
9X5X5	229X127-127			O		229	127	960	790	855	715	695	570	680	6.6
	254X100				O	254	100							6.5	
	254X102			O		254	102							8.7	
	254X114				O	254	114							6.9	
10X5X6¼	254X127				O	254	127							7.8	
10X4X¾X6½	254X121-165.1			O		254	121	950	780	845	710	690	566	675	7.1
10X5X6½	254X127-165.1	O		O		254	127	1,010	830	905	760	765	605	725	7.1
10½X5X6½	267X127-165.1			O		267	127	1,070	880	960	810	780	640	770	8.2
	255X120				O	255	120							9.1	
	280X135		O		O	280	135							9.6	
	300X80				O	300	80							6.2	
12X5X7⅞	305X127		O		O	305	127							9.3	
12X5¾X7⅞	305X145		O		O	305	145							10.7	
	305X152				O	305	152							13.5	
12X4½X8	305X114-203.2			O		305	114	1,040	855	930	780	755	620	745	8.8
12X5½X8	305X140-203.2			O		305	140	1,340	1,100	1,195	1,005	970	795	955	10.9
	315X145		O		O	315	154							11.7	
	330X145				O	330	154							13.6	
	343X140			O		343	140							13.3	
13½X5½X8	343X140-203.2	O	O	O		343	140	1,510	1,240	1,345	1,130	1,095	895	1,080	12.9
	343X152				O	343	152							20.0	
13½X6X8	343X152-203.2		O			343	152	1,560	1,280	1,380	1,160	1,120	920	1,115	14.1
14X4½X8	356X114-203.2	O		O		356	114	1,170	960	1,045	875	850	695	830	11.1
14X5X10	356X127-254			O		356	127	1,335	1,095	1,195	1,000	970	795	955	11.8
	380X165				O	380	165							18.0	
	382X142		O			382	142							16.6	
16X5X10½	406X127-266.7	O	O	O		406	127	1,510	1,240	1,345	1,130	1,095	895	1,080	13.4
16X6X10½	406X152-266.7	O	O	O		406	152	1,910	1,570	1,710	1,435	1,390	1,140	1,360	16.5
16X7X10½	406X178-266.7			O		406	178	2,325	1,910	2,070	1,740	1,685	1,380	1,660	22.0
15X5X11¼	381X127-285.8			O		381	127	1,390	1,140	1,240	1,040	1,010	830	990	12.8
15X6X11¼	381X152-285.8			O		381	152	1,715	1,410	1,530	1,285	1,245	1,020	1,225	14.7
16¼X5X11¼	413X127-285.8	O		O		413	127	1,530	1,250	1,360	1,145	1,105	905	1,090	14.5
16¼X6X11¼	413X152-285.8	O	O	O		413	152	1,920	1,580	1,715	1,440	1,395	1,140	1,370	16.8
16¼X7X11¼	413X178-285.8		O	O		413	178	2,325	1,900	2,060	1,735	1,680	1,380	1,650	20.3
	405X130-305			O		405	130	1,510	1,240	1,350	1,135	1,095	900	1,080	12.5
17X5X12½	432X127-308			O		432	127	1,570	1,290	1,400	1,180	1,145	935	1,120	14.7
17X6X12½	432X152-308		O			432	152	1,980	1,630	1,770	1,485	1,435	1,180	1,410	17.8
18X5X12½	457X127-308		O	O		457	127	1,640	1,350	1,470	1,230	1,195	980	1,170	17.1
18X6X12½	457X152-308	O	O	O		457	152	2,100	1,720	1,870	1,575	1,525	1,250	1,500	19.7
18X7X12½	457X178-308	O	O	O		457	178	2,550	2,100	2,280	1,910	1,855	1,520	1,820	23.0
18X8X12½	457X203-308	O	O	O		457	203	3,000	2,475	2,680	2,250	2,180	1,790	2,150	26.7
18X9X12½	457X229-308		O	O		457	229	3,450	2,850	3,090	2,600	2,510	2,060	2,475	30.0
21X5X15	533X127-381		O			533	127	1,840	1,510	1,640	1,385	1,335	1,095	1,320	20.4
21X6X15	533X152-381		O	O		533	152	2,350	1,930	2,100	1,765	1,710	1,400	1,680	24.3
21X7X15	533X178-381	O	O	O		533	178	2,875	2,350	2,560	2,150	2,085	1,710	2,050	32.3
21X8X15	533X203-381	O	O	O		533	203	3,375	2,775	3,025	2,540	2,455	2,015	2,425	35.7
21X9X15	533X229-381			O		533	229	3,900	3,200	3,475	2,920	2,830	2,320	2,775	46.6





**PATTERN: TRACTION & SMOOTH**

Size		MTA	MS	PL	RIB	O.D. (mm)	W.D. (mm)	Load Capacity(kg)								Weight (kg)
								~10km/h		~16km/h		~25km/h		~16km/h		
inch	mm							Load	Steer	Load	Steer	Load	Steer	Others		
<b>POB</b>																
20X8X16	508X203-406.4		O	O		508	203	3,010	2,470	2,685	2,255	2,185	1,790	2,150	30.8	
20X9X16	508X229-406.4		O			508	229	3,445	2,830	3,075	2,580	2,500	2,050	2,460	34.3	
22X8X16	559X203-406.4		O			559	203	3,500	2,875	3,130	2,625	2,545	2,085	2,500	38.5	
22X9X16	559X229-406.4	O	O	O		559	229	4,050	3,325	3,600	3,025	2,930	2,400	2,875	42.6	
22X12X16	559X305-406.4	O		O		559	305	5,625	4,625	5,030	4,225	4,090	3,350	4,025	59.0	
	645X250-410			O		645	250	4,810	3,930	4,180	3,430	3,400	2,720	3,125	72.4	
28X16X20	711X406-500			O		711	406	9,735	8,000	8,695	7,300	7,055	5,795	6,950	134.3	
28X12X22	711X305-559			O		711	305	6,740	5,540	6,020	5,060	4,900	4,015	4,820	78.3	
40X16X30	1016X406-762			O		1,016	406	12,420	10,160	10,810	8,870	8,550	7,095	8,060	152.8	

- \* Load capacity is based on counter balanced forklift truck. For other vehicles, please refer to "Others".
- \* There might be a weight difference in same size depending on its pattern.
- \* As tire type and its weight can be different depending on forklift model, please consult with its forklift manufacturer and tire supplier for appropriate product.
- \* For other sizes not on the list, please contact the NEXEN export in your area to check tire availability.



 **NEXEN CORPORATION**